

Specifications

	LM-8	LM-8C
Target	Topcon's Original Cross Line Target	AO Type Target Corona Target
Scale Reading	Internal	
Vertex Power Scale	0 to ± 25 diopter	
Vertex Power Scale Graduation	0.125D up to ± 5 D / 0.25D above ± 5D	
Prism Diopter Scale	0 to 6 prism diopters 1 Δ graduations	
Eyepiece Adjustment	+3 to -5 diopters	
Lens Diameter	20mm to 90mm in diameter	
Tilt Angle	0 to 90 degree, freely adjustable	
Light Source	LED 570 nm	
Dimensions	160 (W) x 420 (D) x 310 (H)mm	
Weight	approx. 4.0kg	
Power Source	Battery operated (1.5V sizeD x 2)Auto shut off 5 min.	

Optional Accessories

- » Prism Compensator
- » AC Adapter
- » Conventional Ink Pad System



* Not available for sale in the United States.
 * Not available in all countries, please check with your distributor for availability in your country
 * Subject to change in design and/or specifications without advanced notice.

IMPORTANT In order to obtain the best results with this instrument, please be sure to review all user instructions prior to operation.



TOPCON CORPORATION
 75-1 Hasunuma-cho, Itabashi-ku, Tokyo 174-8580, Japan. Phone:+81-(0)3-3558-2522/2502 Fax:+81-(0)3-3965-6898 www.topcon.co.jp

TOPCON MEDICAL SYSTEMS, INC.
 111 Bauer Drive, Oakland, NJ 07436, U.S.A.
 Phone:+1-201-599-5100 Fax:+1-201-599-5250 www.topconmedical.com

TOPCON CANADA INC.
 110 Provencher Avenue, Boisbriand, QC J7G 1N1 CANADA
 Phone:+1-450-430-7771 Fax:+1-450-430-6457 www.topcon.ca

TOPCON EUROPE MEDICAL B.V.
 Essebaan 11, 2908 LJ Capelle a/d IJssel, P.O.Box145,
 2900 AC Capelle a/d IJssel, THE NETHERLANDS
 Phone:+31-(0)10-4585077 Fax:+31-(0)10-4585045
 E-mail: medical@topcon.eu; www.topcon-medical.eu

ITALY OFFICE
 Viale dell'Industria 60, 20037 Paderno Dugnano, (Milano), ITALY
 Phone:+39-02-9186671 Fax:+39-02-91081091 E-mail: info@topcon.it; www.topcon.it

DANMARK OFFICE
 Præstemarkvej 25, 4000 Roskilde, DANMARK
 Phone:+45-46-327500 Fax:+45-46-327555
 E-mail: topcon@topcondanmark.dk www.topcondanmark.dk

IRELAND OFFICE
 Unit 276, Blanchardstown, Corporate Park 2 Ballycoolin Dublin 15, IRELAND
 Phone:+353-18975900 Fax:+353-18293915 E-mail: medical@topcon.ie; www.topcon.ie

TOPCON S.A.R.L.
 BAT A1 3 route de la revolté 93206 SAINT DENIS CEDEX
 Phone:+33-1-49-21-23-23 Fax:+33-1-49-21-23-24 E-mail:topcon@topcon.fr; www.topcon.fr

TOPCON DEUTSCHLAND MEDICAL G.m.b.H.
 Hanns-Martin-Schleyer Strasse 41, D-47877 Willich, GERMANY
 Phone:+49-(0)2154-8850 Fax:+49-(0)2154-885177 E-mail:med@topcon.de; www.topcon.de

TOPCON SCANDINAVIA A.B.
 Neogatan 2, P.O.Box 25, 43151 Mölndal, SWEDEN
 Phone:+46-(0)31-7109200 Fax:+46-(0)31-7109249 E-mail:medical@topcon.se; www.topcon.se

TOPCON ESPAÑA S.A.
 HEAD OFFICE
 Frederic Mompou 4 Esc. A Bajos 3, 08960 Sant Just Desvern Barcelona, SPAIN
 Phone:+34-93-4734057 Fax:+34-93-4733932 E-mail: medical@topcon.es; www.topcon.es

TOPCON (GREAT BRITAIN) LTD.
 Topcon House, Kenmet Side, Bone Lane, Newbury, Berkshire RG14 5PX United Kingdom
 Phone:+44-(0)1635-551120 Fax:+44-(0)1635-551170 E-mail:medical@topcon.co.uk; www.topcon.co.uk

TOPCON POLSKA Sp. z o. o.
 ul. Warszawska 23, 42-470 Siewierz, POLAND
 Phone:+48-(0)32-6705045 Fax:+48-(0)32-6713405 www.topcon-polska.pl

TOPCON SINGAPORE MEDICAL PTE. LTD.
 1 JALAN KILANG TIMOR #03-01 PACIFIC TECH CENTRE SINGAPORE 159303
 Phone:+65-68720606 Fax:+65-67736150
 E-mail:medical_sales@topcon.com.sg www.topcon.com.sg

REPRESENTATIVE OFFICE IN INDONESIA
 Level 38, Tower A, Kota Kasablanka unit GH-04, Jl.
 Casablanca, Kav 88, Jakarta, Indonesia 12870
 Phone:+62-21-2963-9004

TOPCON INSTRUMENTS (MALAYSIA) SDN.BHD.
 No. D1, (Ground Floor), Jalan Exalla 2, Off Jalan Ampang Putra,
 Taman Ampang Hilir, 55100 Kuala Lumpur, MALAYSIA
 Phone:+60-(0)3-42709866 Fax:+60-(0)3-42709766

TOPCON INSTRUMENTS (THAILAND) CO.,LTD.
 77/62 Sinnsathorn Tower, 37th Floor, Krungthamburi Rd., Klongtonnai,
 Klongsarn, Bangkok 10600, THAILAND
 Phone:+66-(0)2-440-1152-7 Fax:+66-(0)2-440-1158

Mehra Eyetech Private Limited
 801 B Wing, Lotus Corporate Park, Graham Firth Steel Compound Goregaon (East)
 Mumbai 400063 Maharashtra, INDIA
 Phone:+91-22-61285455 www.mehraeyetech.in

LM-8/8C

Lensmeter



YOUR VISION. OUR FOCUS.

Easy verification of cylindrical axis, High resolution optics, and Sharper target Image.

Why is it so easy to measure lenses with a low range cylindrical power using the LM-8 series? The answer is the technological harmony of high magnification optics and excellent wide field eye piece. Topcon is the only one manufacturer that can offer next century optical technology in the new generation telescopic lensmeter.

Three types of target at your choice

Three types of target are available for your preference; opcon's original cross line target, AO type target and conventional corona target

*Topcon's original cross line target

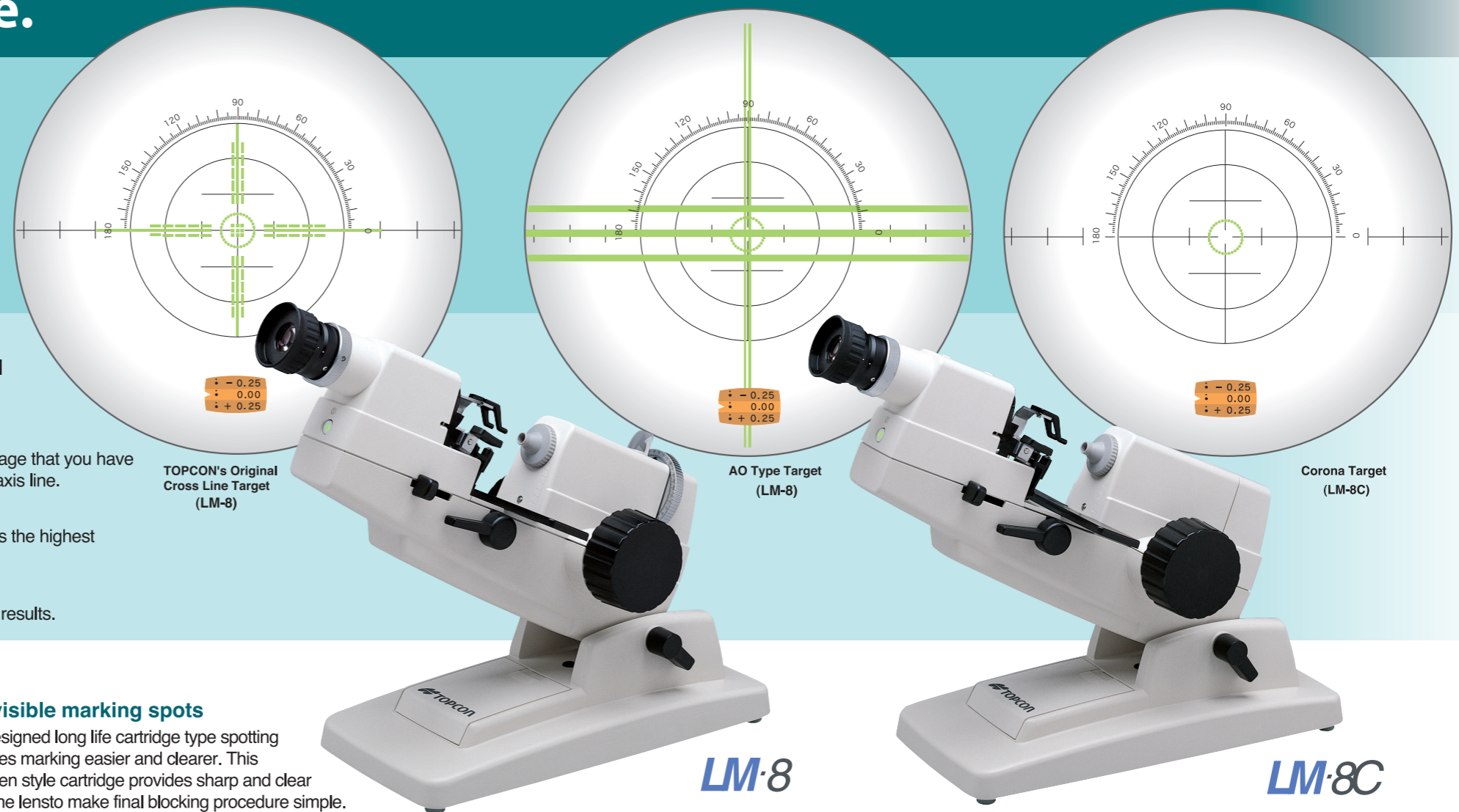
It's new combination of corona and cross line target provides you the sharpest image that you have ever seen. He central square spots gives extremely fine verification of cylindrical axis line.

*AO type target

Traditional AO type target is also available with superb optics. Topcon guarantees the highest quality of power and cylinder verification.

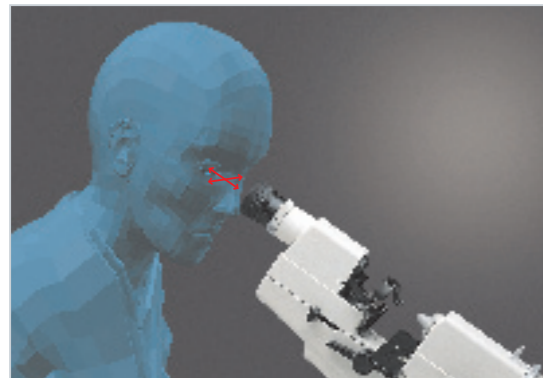
*Corona target

Simple but well proven and widely accepted, the corona target also offers superb results.



High and wide field eyepoint eyepiece

The newly designed eyepiece minimises shading effect. Thanks to easy conformation of internal scale and target observation as well as irritation free measurement.



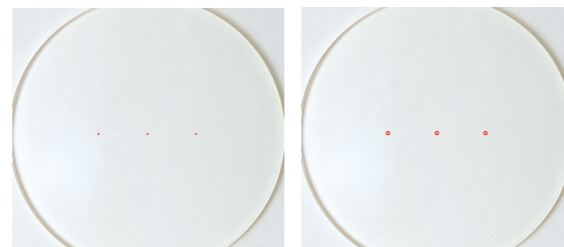
Clear visualisation of internal axis scale

The new optics of the LM-8 enhances the internal axis scale allowing for use even in a dark room.

Clearly visible marking spots

A newly designed long life cartridge type spotting device makes marking easier and clearer. This ball-point pen style cartridge provides sharp and clear marks on the lens to make final blocking procedure simple. Replacing the cartridge is very easy and clean.

* Conventional ink pad system is still available as an option.



Coventional Marking

LM-8 series

Dry battery operated LED light

Almost eternal life LED light source eliminates the need of bulb replacement. The modern and stylish wireless design means flexibility in fitting the LM-8 into any environment you desire without having to install additional power outlets. AC adaptor is also available as an optional accessories.



Contact lens measurement

Both soft and hard contact lens can be measured by putting the telescope body to upright position.



Prism compensator (Optional Accessories)

An optional prism compensator is also available to measure the prismatic lens from 5 prism diopter to 14 prism diopter in 1 diopter step.

